

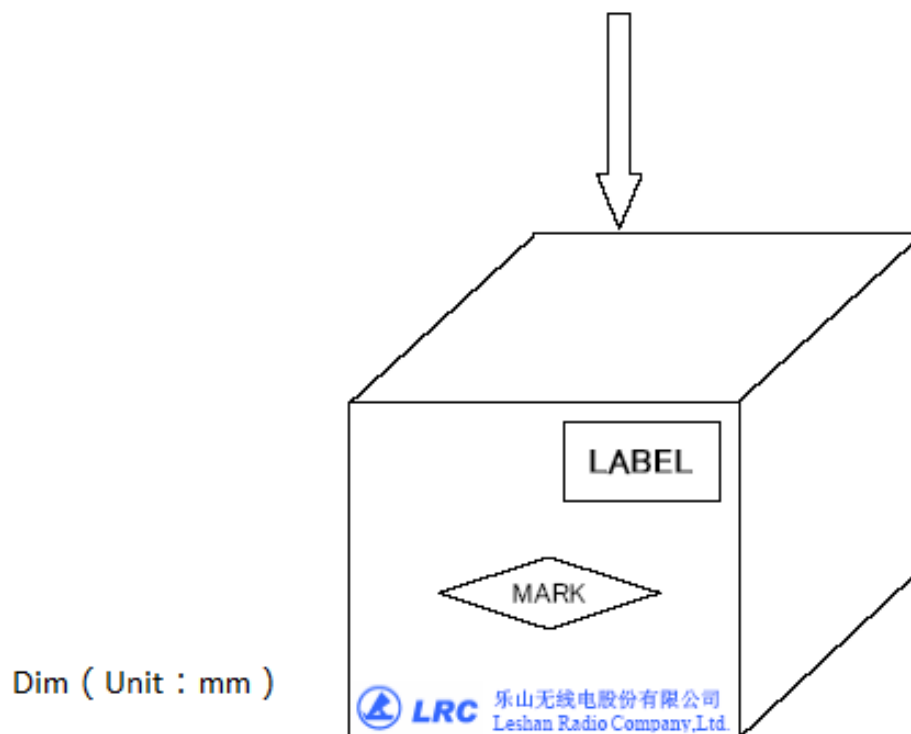
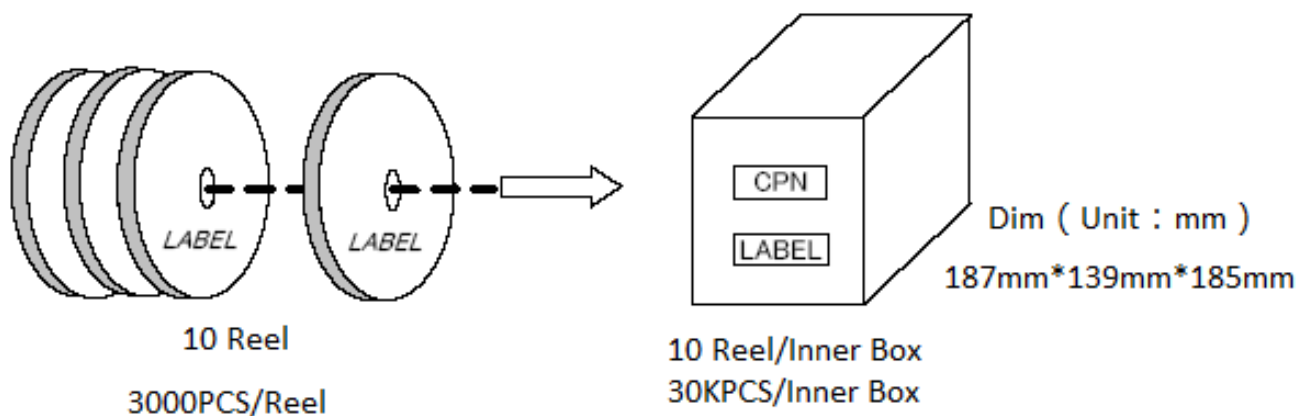
SOT23 General Packing Specification

CS-024

Page 1 of 7

1.0 Packing method

3000PCS/Reel



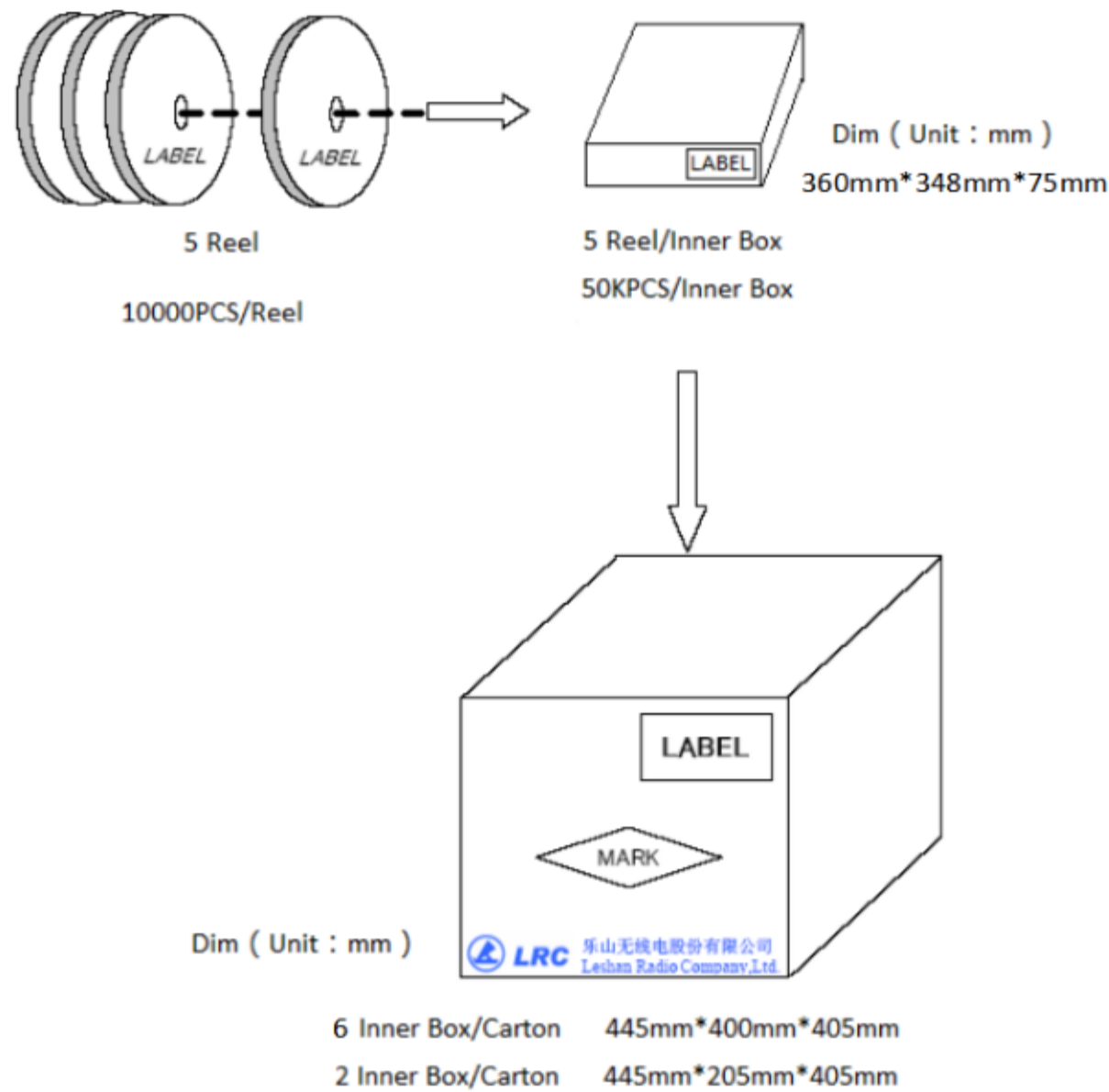
12 Inner Box/Carton	445mm*400mm*405mm
6 Inner Box/Carton	445mm*205mm*405mm
3 Inner Box/Carton	445mm*215mm*220mm

SOT23 General Packing Specification

CS-024

Page 2 of 7

10000PCS/Reel



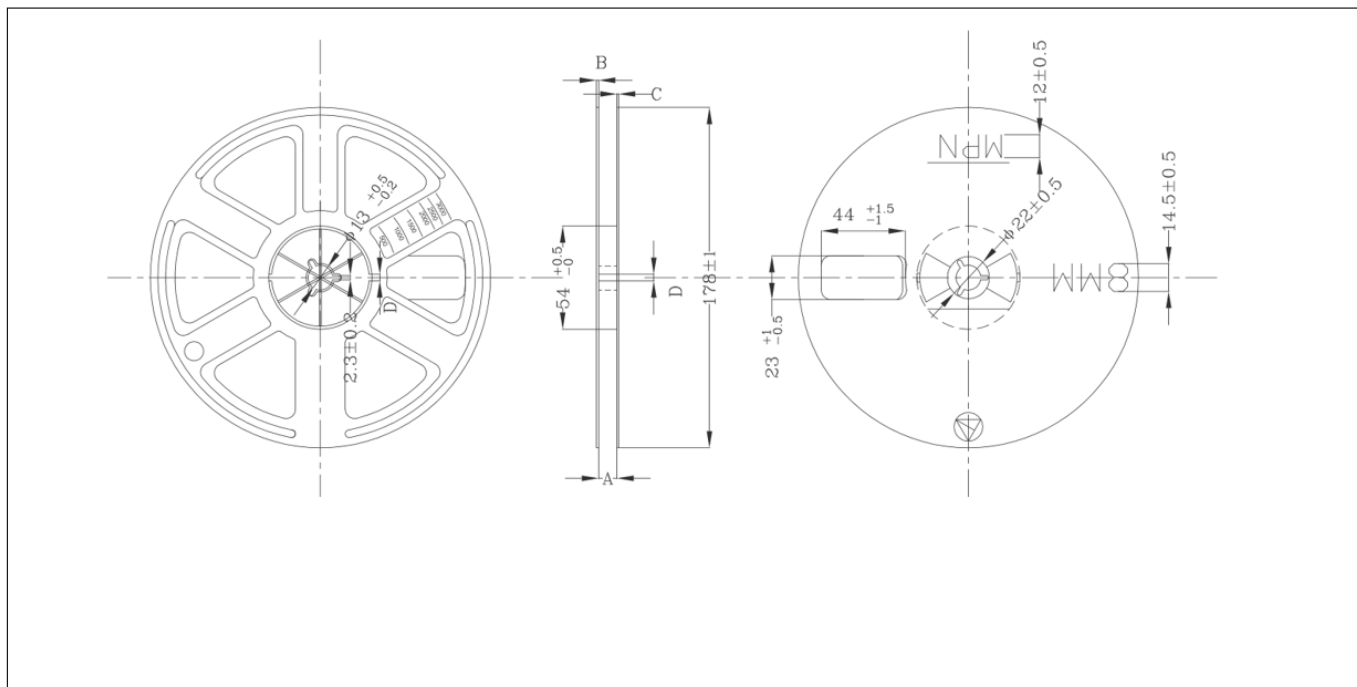
SOT23 General Packing Specification

CS-024

Page 3 of 7

2.0 Reel dimensions

7inch*8mm Reel (3000PCS/Reel)



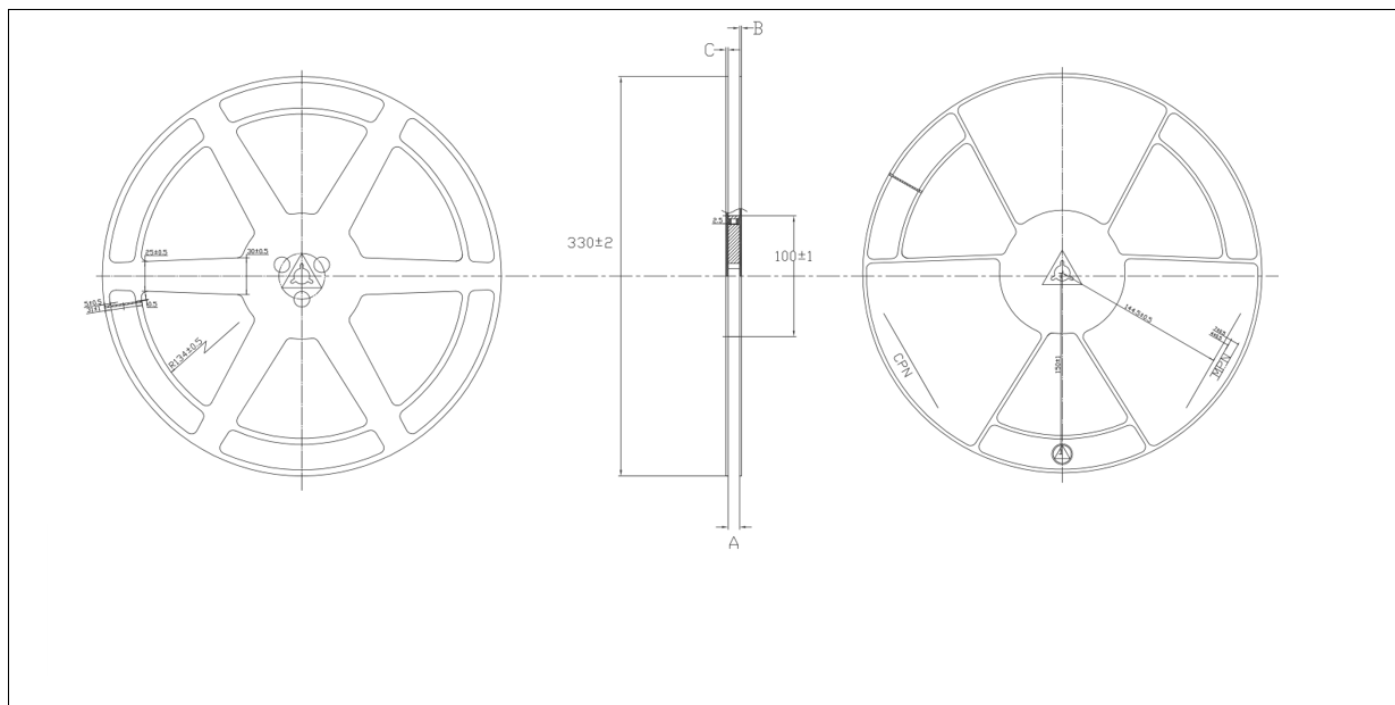
Size	A	B	C	D
Spec(mm)	9.6±1.2	1.2 ^{+0.3} _{-0.05}	0.85 ^{+0.1} _{-0.05}	3.5±0.5

SOT23 General Packing Specification

CS-024

Page 4 of 7

13inch*8mm Reel (10000PCS/Reel)



Size	A	B	C
Spec(mm)	9.6 ± 1.2	$2^{+0.3}_{-0.2}$	$2^{+0.3}_{-0.2}$

3.0 Product orientation

Standard product orientation SOT23

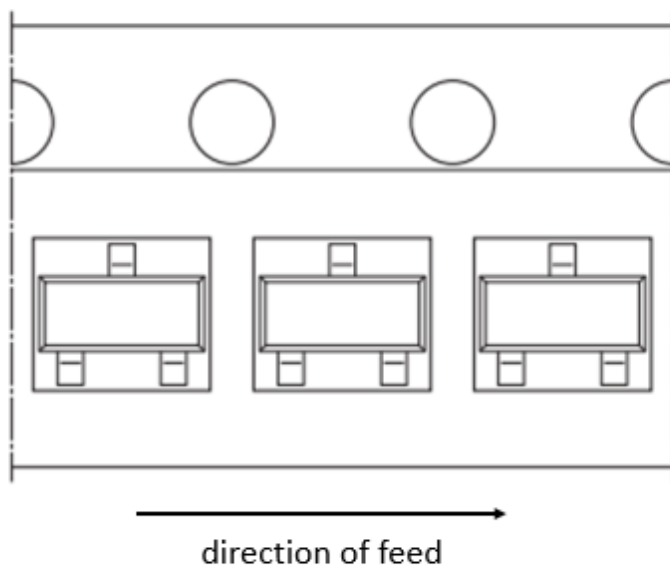


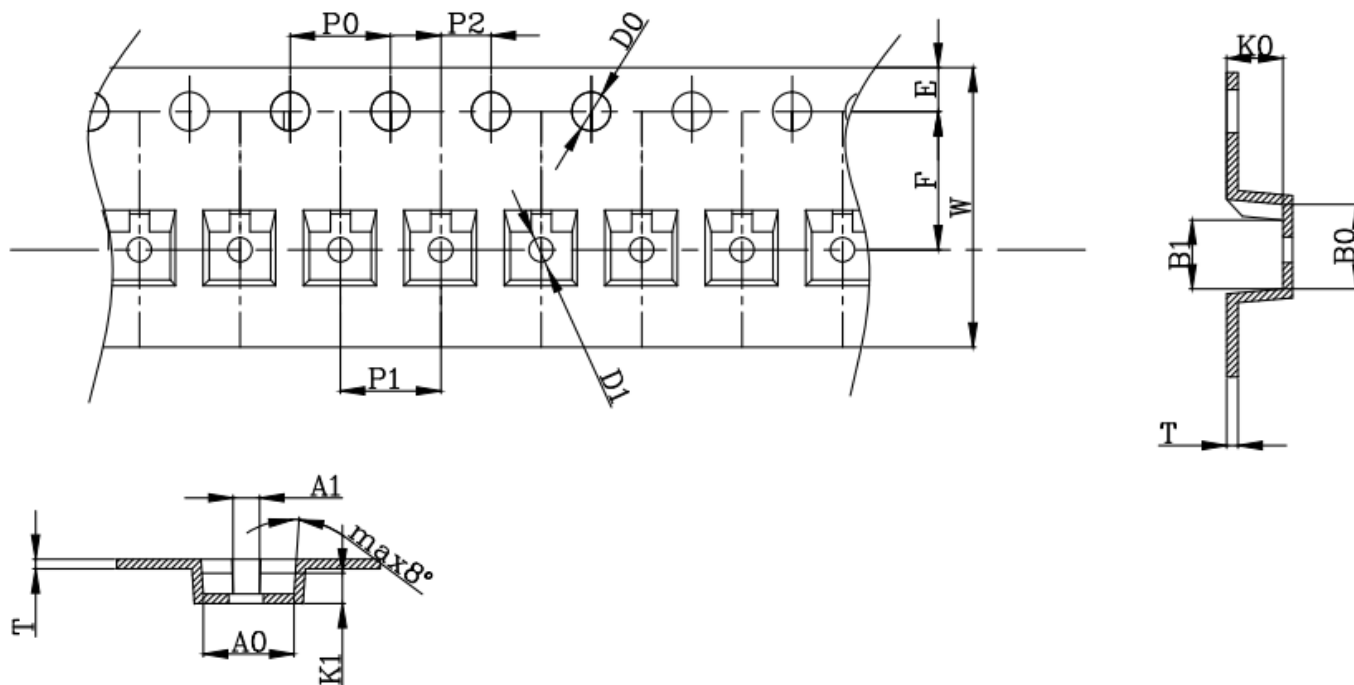
Fig 2. Product orientation in carrier tape

SOT23 General Packing Specification

CS-024

Page 6 of 7

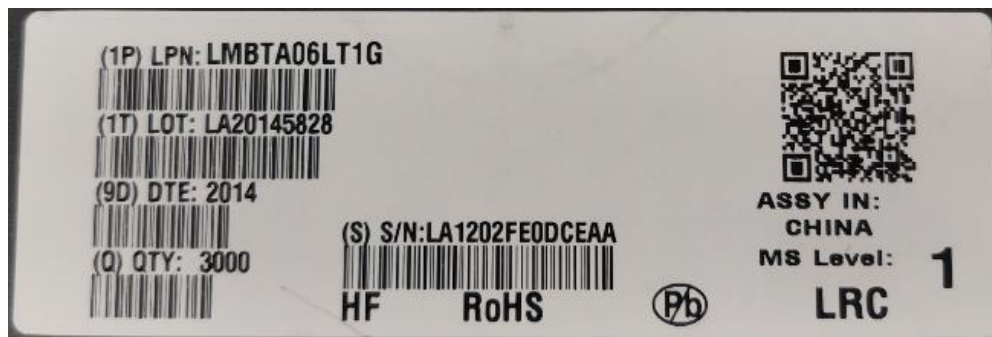
4.0 Carrier tape dimensions



Symbol	A0	A1	B0	B1	K0	K1	P0	P1
Spec(mm)	3.15 \pm 0.1	1.09 \pm 0.1	2.77 \pm 0.1	2.1 \pm 0.1	1.22 \pm 0.1	0.65 \pm 0.1	4.0 \pm 0.1	4.0 \pm 0.1
Symbol	P2	T	E	F	D0	D1	W	
Spec(mm)	2.0 \pm 0.05	0.2 \pm 0.02	1.75 \pm 0.1	3.5 \pm 0.05	1.55 \pm 0.05	1.0 \pm 0.1	8.0 $\begin{smallmatrix} +0.2 \\ -0.1 \end{smallmatrix}$	

SOT23 General Packing Specification	CS-024
	Page 7 of 7

5.0 Barcode label



Note:

1. Example of typical reel barcode label.
2. The HF/RoHS/Pb-free,MSL level may vary depending upon different P/N.

6.0 Disclaimer

- 6.1 LRC reserve the right to make modifications, enhancements, improvements, corrections or other changes without further notice to this document and any product described herein. Before you use our Products, please contact our sales representative and verify the latest specifications.
- 6.2 LRC has used reasonable care to ensure the accuracy of the information contained in this document, However, LRC does not warrants that such information is error-free, and LRC shall have no responsibility for any damages arising from any inaccuracy or misprint of such information.
- 6.3 LRC does not assume any liability arising out of the application or use of this document or any product described herein.
- 6.4 LRC does not warrant or accept any liability whatsoever in respect of any products purchased through unauthorized sales channel.
- 6.5 This document, in part or in whole, may not be reprinted or reproduced without prior consent of LRC.